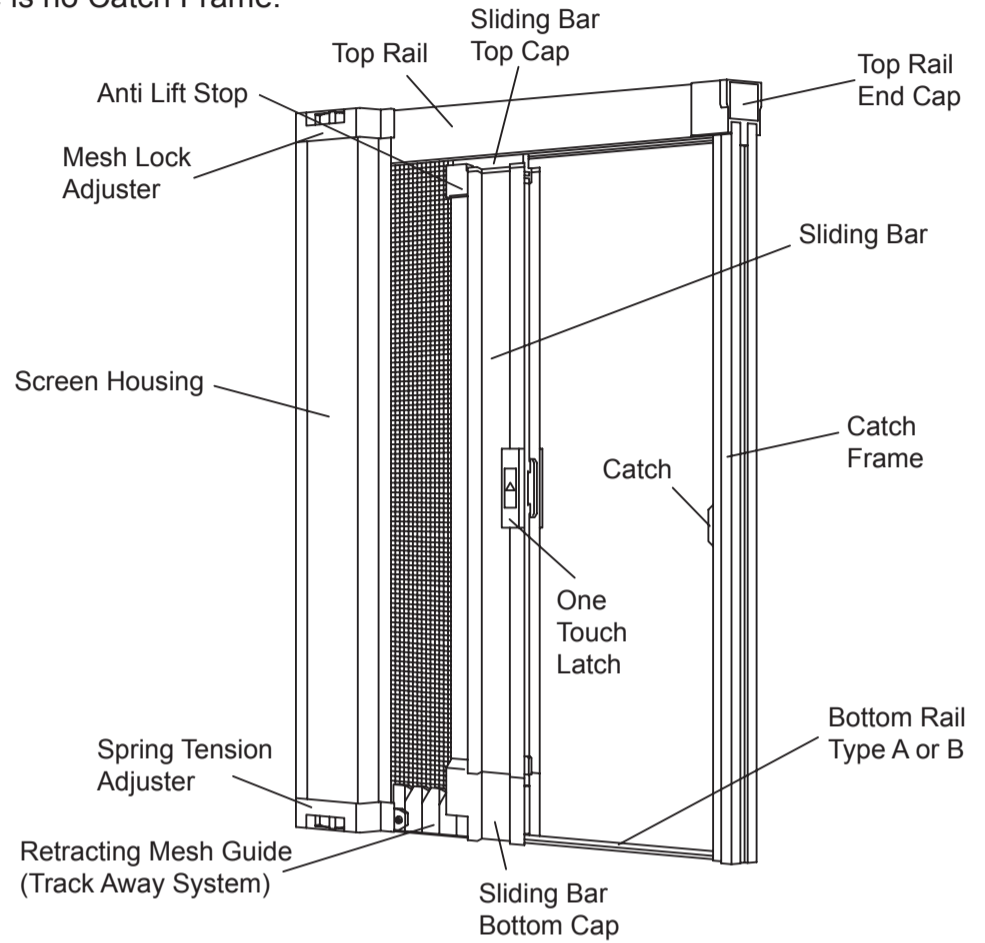


Step #1 Parts List

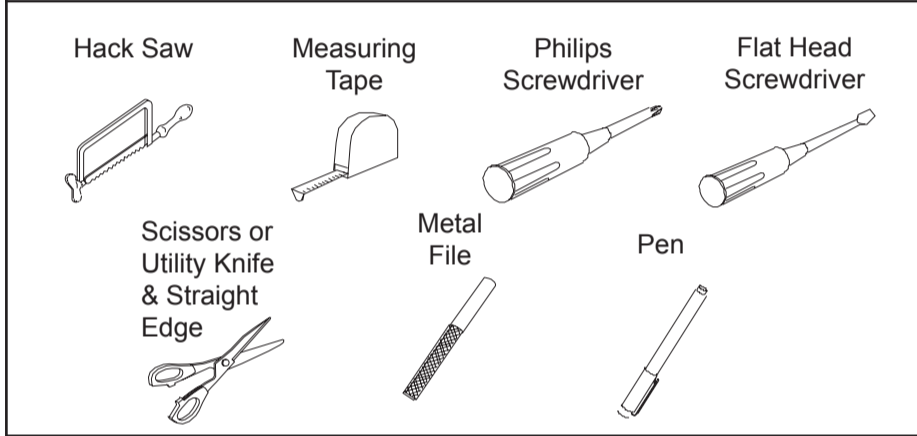


Screen Components

NOTE: In the case of Double Door Screens there is no Catch Frame.



Make sure you have all the Tools Required (not included)

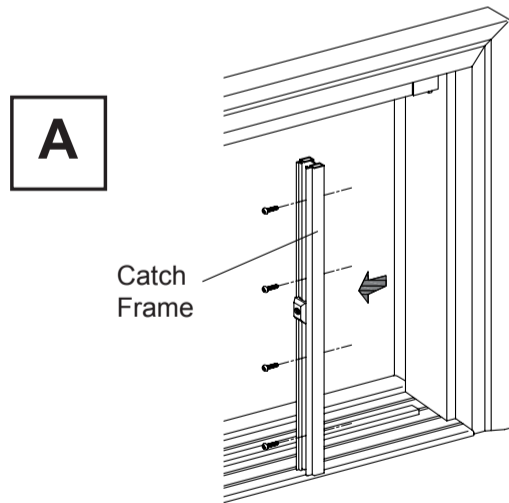


Step #2 Removing the Screen Housing Assembly

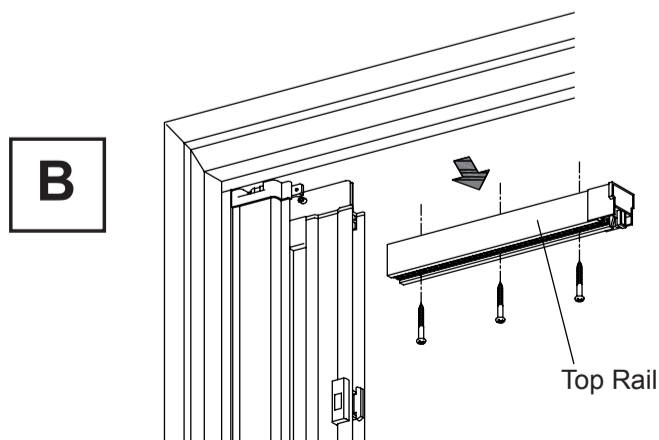
NOTE: This manual shows a Left Hinged Door, but the process is the same for Right Hinged Doors.

SINGLE SCREEN

- (1) Remove the Catch Frame by unscrewing it. Figure **A**.

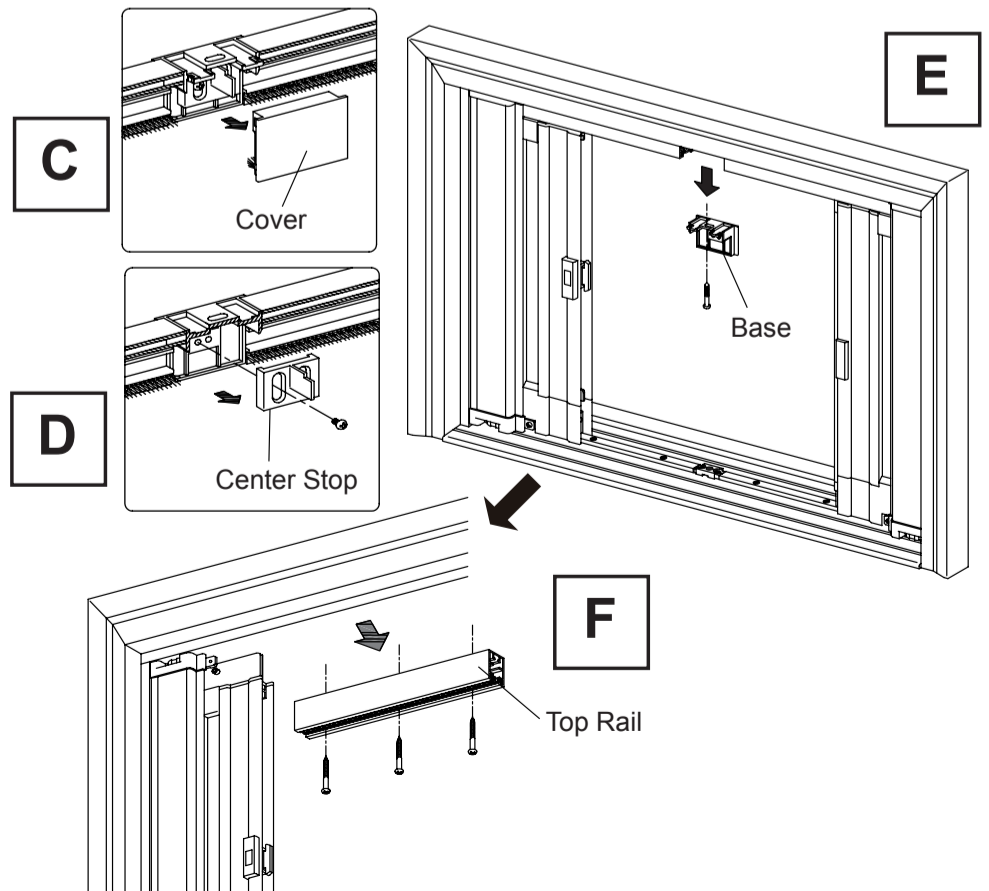


- (2) Remove the Top Rail by unscrewing it. Figure **B**.



DOUBLE SCREEN

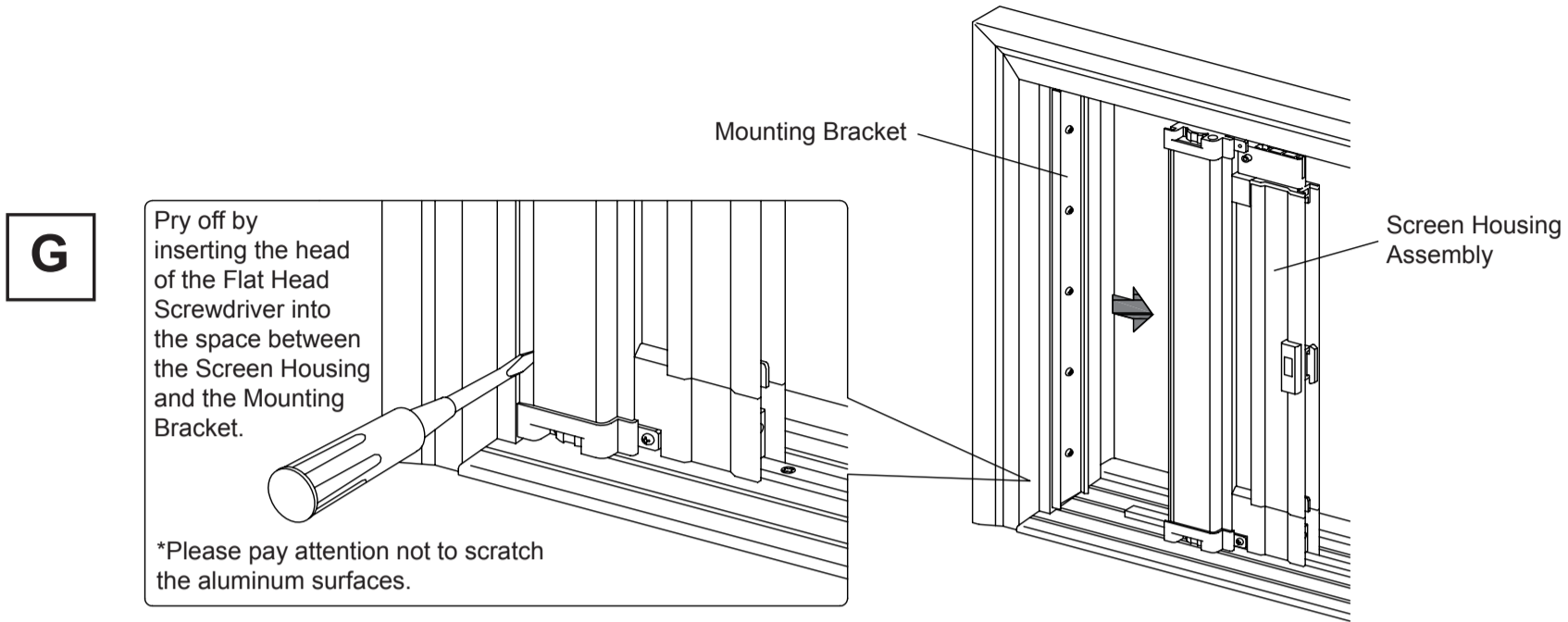
- (3) Remove the Cover of the Top Center Link. Figure **C**.
 (4) Remove the Center Stop of the Top Center Link. Figure **D**.
 (5) Remove the Base of the Top Center Link. Figure **E**.
 (6) Remove the Top Rail by unscrewing it. Figure **F**.



NOTE: For single screens, skip sub sections 3 - 6, and go on to 7.

Step #2 Continued

(7) Remove the Screen Housing Assembly from the Mounting Bracket. Figure **G**.



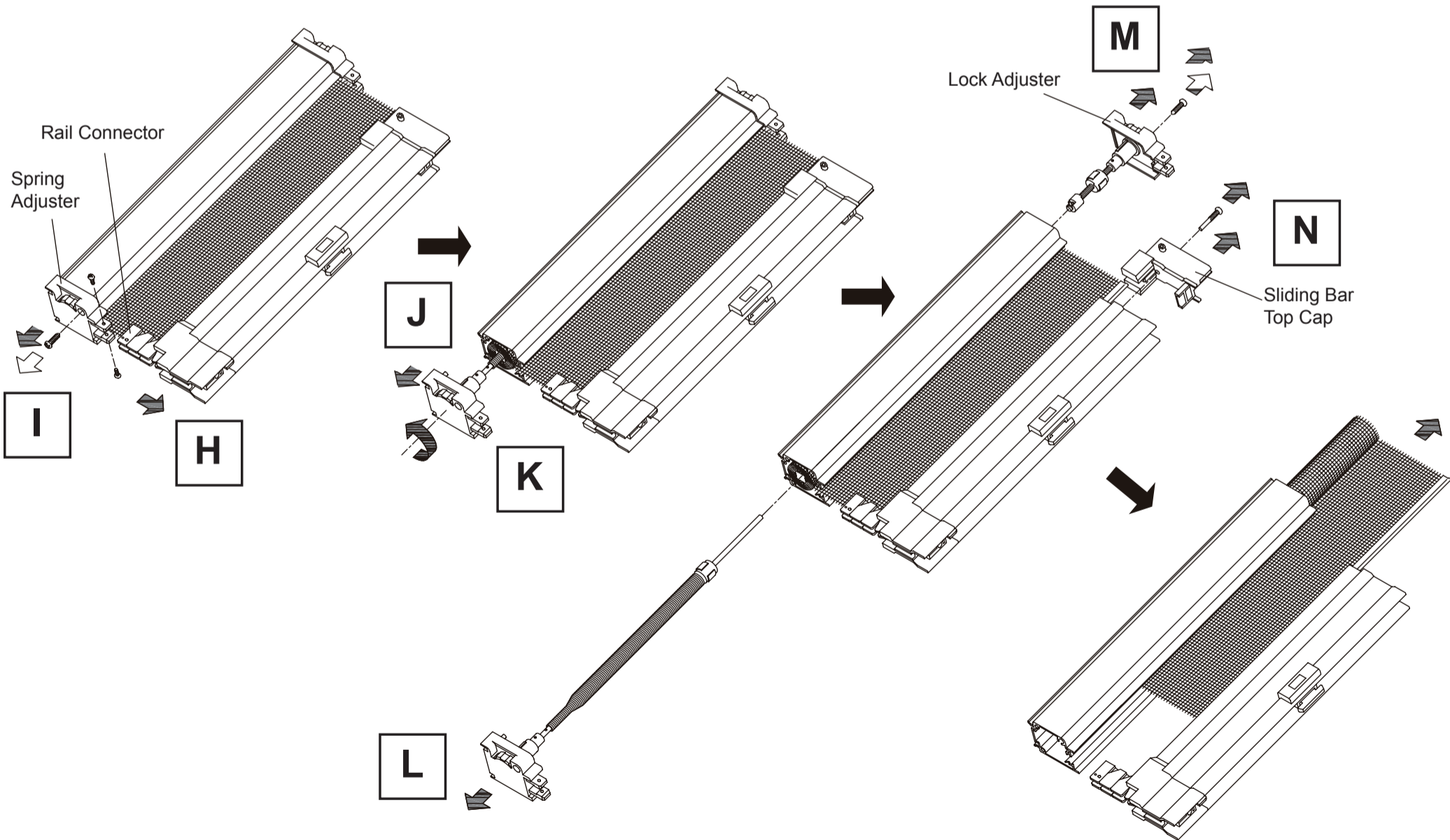
Step #3 Removing the existing Mesh Cartridge

(1) Unscrew and remove the Rail Connector from the Spring Adjuster. Refer to Figure **H**. Remove the screw from the Spring Adjuster. Figure **I**.

(2) While holding tightly, remove the Spring Adjuster by sliding it from the Screen Housing. Figure **J**. Gradually allow the Spring Adjuster to turn which releases the tension of the spring. Figure **K**.

(3) Remove the Spring Adjuster entirely from the Screen Housing. Figure **L**. Remove the Lock Adjuster. Figure **M**. Remove the Sliding Bar Top Cap. Figure **N**.

(4) Pull the Mesh off from the Screen Housing and the Sliding Bar.



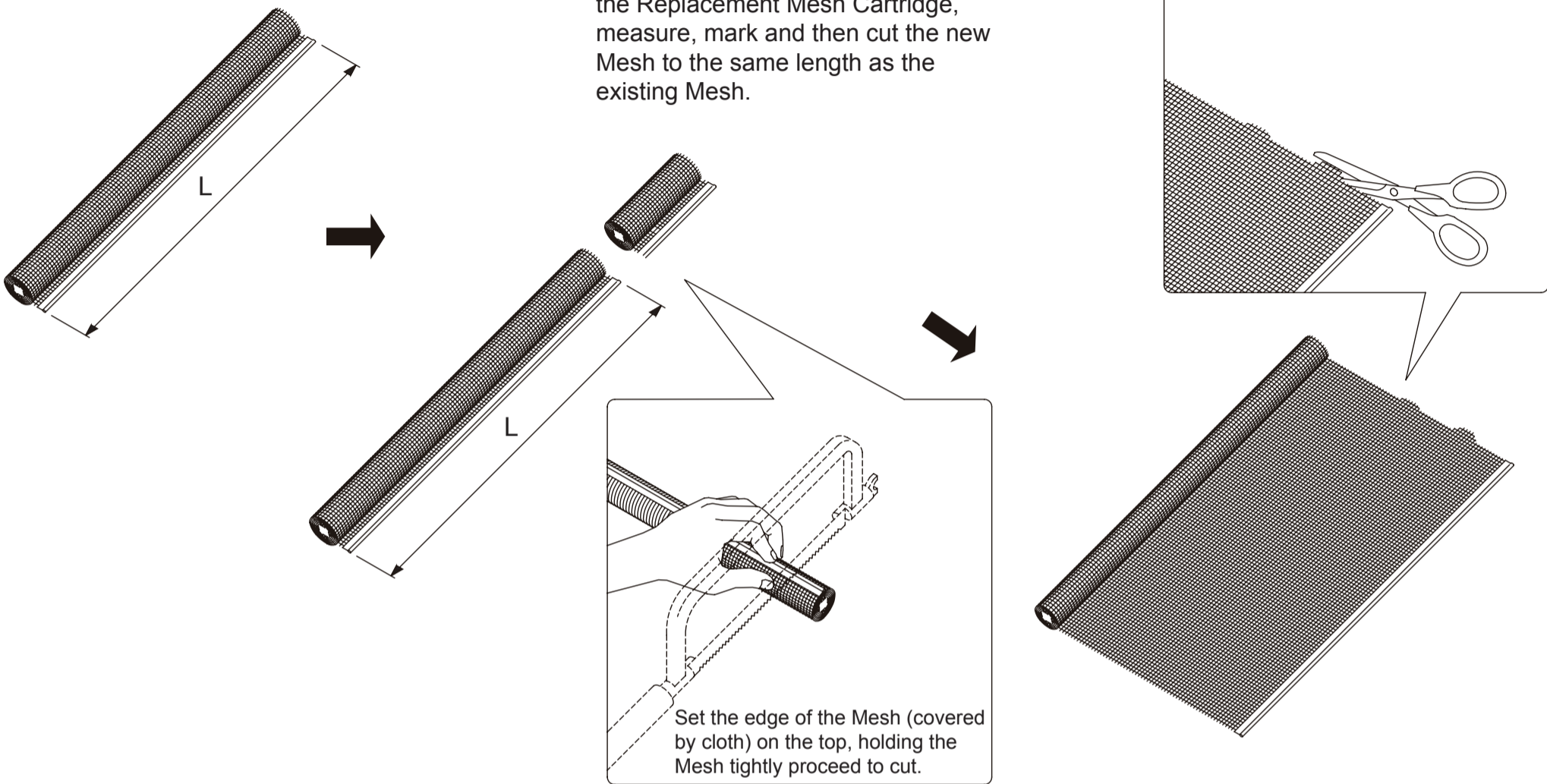
Step #4 Sizing the new Mesh Cartridge

(1) Measure the length of the existing Mesh and record below.

Length of old mesh

(2) Confirm the length of the new Mesh Cartridge and compare this dimension to that of the existing Mesh. If the measurements of the existing and new Mesh Cartridges are the same, move to Step #5. If the length of the old Mesh Cartridge is less than that of the Replacement Mesh Cartridge, measure, mark and then cut the new Mesh to the same length as the existing Mesh.

(3) Uncoil the cut Mesh, cut off the part jutting out using scissors.



Step #5 Reinstall the Screen

(1) Reinstall the Screen onto the frame by reversing the procedures of Step #3 and Step #2. When resetting the Spring Tension, make approximately 25 turns times rotation (opposite of the way when released) of the Spring Adjuster. After completely reinstalling, adjust the Spring Tension by turning the dial of the Spring Adjuster if required.

Any questions? Contact our Toll Free Help Line at 1-866-333-8868.



Seiki Screen Systems
www.seikiscreensystems.com



Phantom Mfg. (Int'l) Ltd.
www.phantomcreens.com

© 2009 Phantom Mfg. (Int'l) Ltd. & Seiki Screen Systems